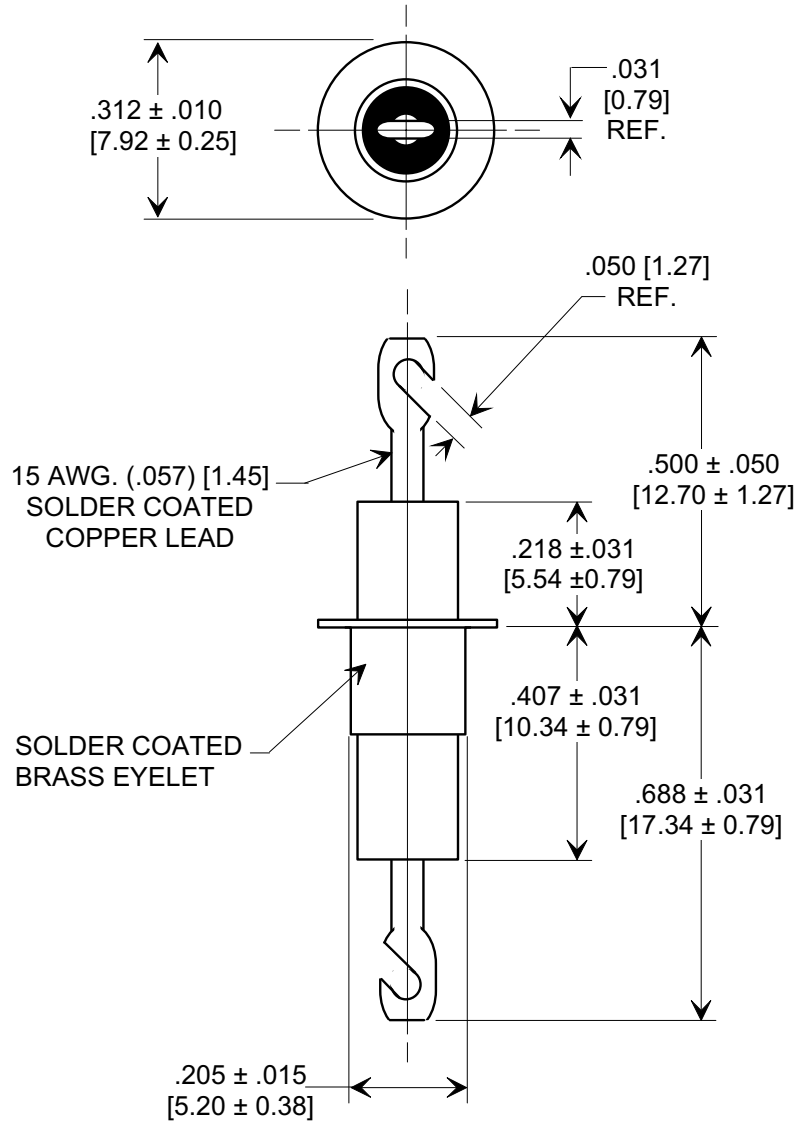
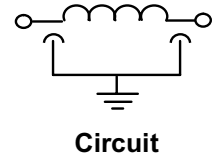
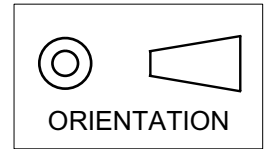


MARKETING SALES DRAWING
DIMENSIONS IN INCHES - DO NOT SCALE THIS DRAWING
DIMENSIONS IN METRIC - []

Electrical Testing
per Tusonix standard
test plans and Mil-Std-202
Test Methods.



| MIN. CAP (pF) | WORKING VOLTAGE (WVDC) | | CURRENT Idc | I.R. MIN. @ 100 (VDC) | DWV | MINIMUM NO-LOAD INSERTION LOSS | | | |
|---------------|------------------------|-------|-------------|-----------------------|----------|--------------------------------|---------|-------|--------|
| | 85°C | 125°C | | | | 10 MHz | 100 MHz | 1 GHz | 10 GHz |
| 4500 | 1000 | 500 | 25A | 10 G Ω | 1500 VDC | 8 | 50 | 70 | 70 |

| | | | | | | | |
|---------------------------------|---|---|---|---|-----------------|--|--|
| X-2015 Rev-0 REVISION RECORD | Original Release C.O. 20031201-5-01 | DIM'S REV'D .500 ± .050 WAS ± .031 & [5.20] WAS [5.21], TOL'S ± .031 DELETED L.E. 02-19-04 20040219-3-01 | --TOLERANCES-- Unless Otherwise Specified DECIMAL ± // // ANGLES ± // // | Title EYELET STYLE EMI FILTER | | | |
| | Drawn S.M. 12-01-03 | | | Scale 3 X | | | |
| | Approved T.C. 12-01-03 | | | A | 4106-001 | | |
| | TUSONIX TUCSON, ARIZONA | | | | | | |